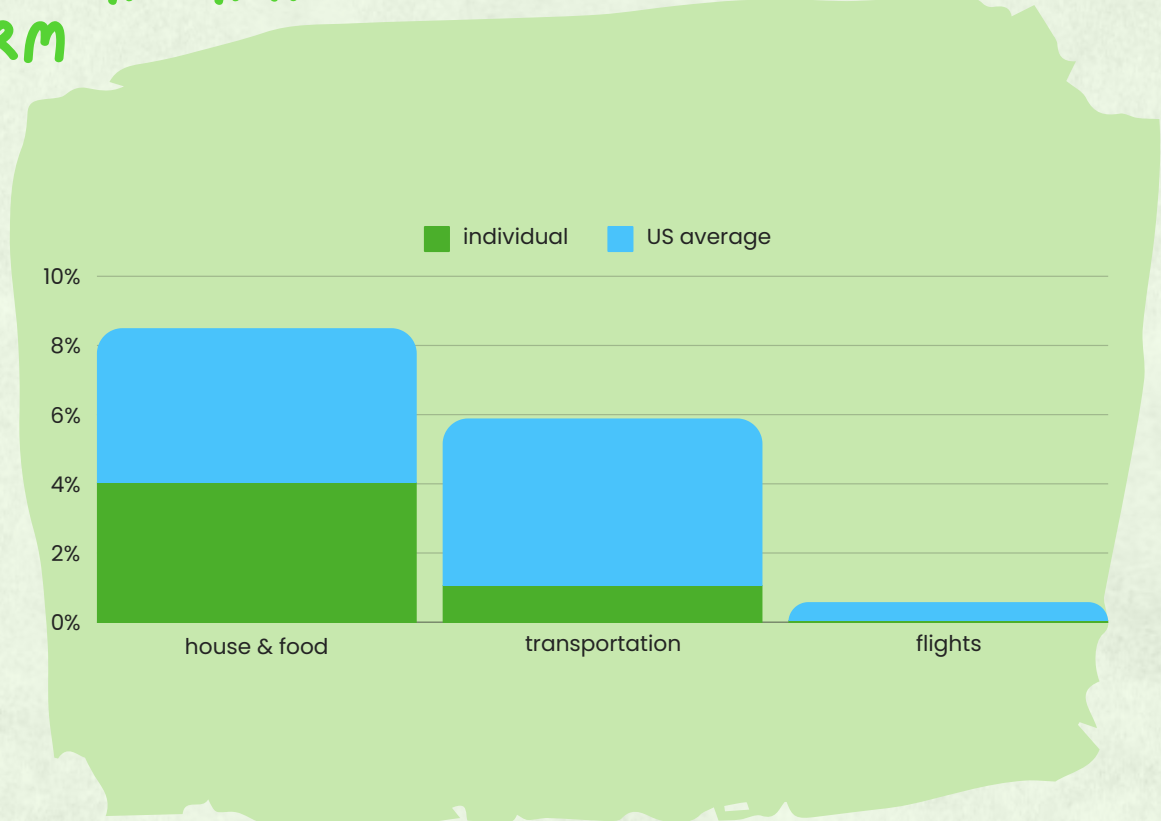
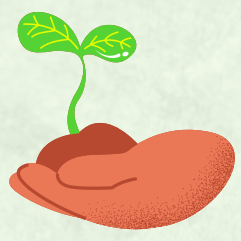


CS56N01 CARBON FOOTPRINT INFOGRAPHIC

SHILPA KONERU

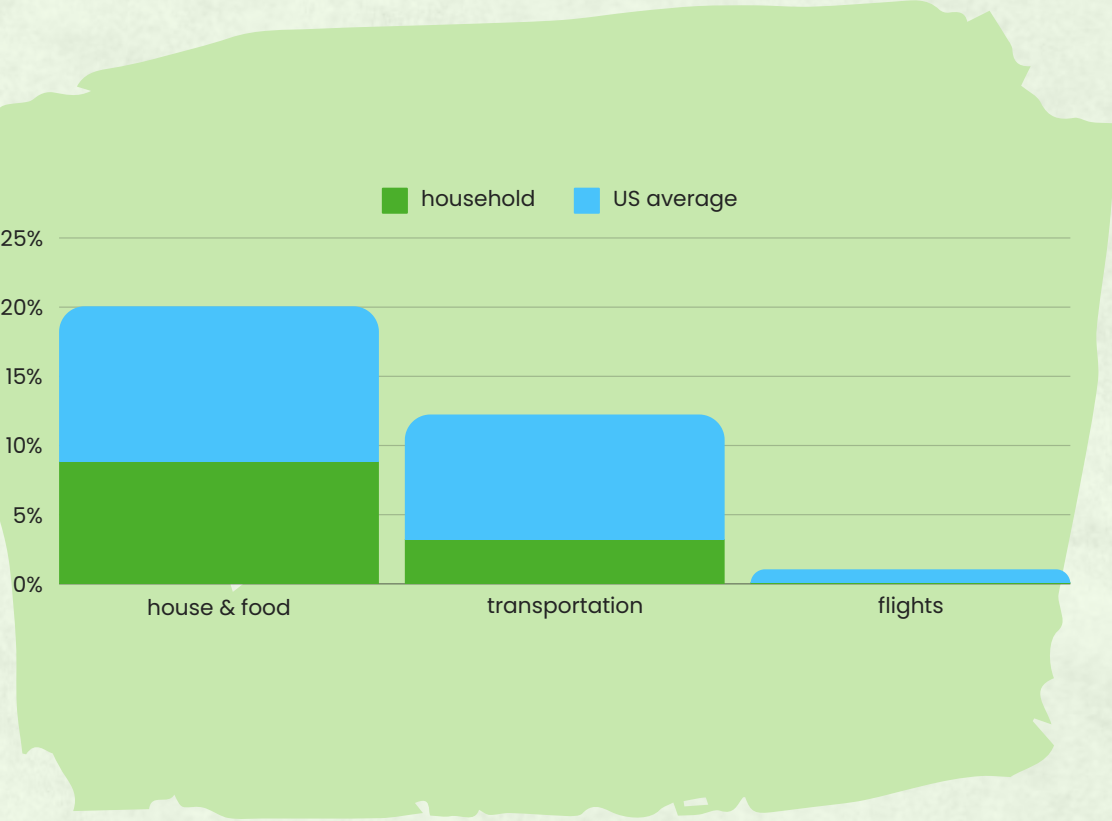
INDIVIDUAL

COLLEGE STUDENT IN A DORM



FUTURE FAMILY

TWO ADULTS ONE KID



WHY THE DIFFERENCES?

food consumption is greater with a larger group of people to feed as opposed to one

not living on a walkable campus, but instead driving to work and school increases transportation

vacations and traveling will be integrated into our home life as opposed to college and school life currently