

## LFDS Version 2.1 Changes

When the LFDS executable is started, the dialog box shown in Figure 1 is displayed:

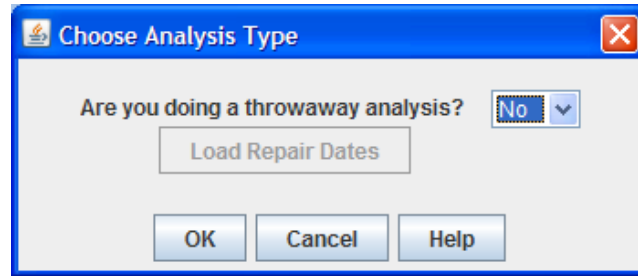


Figure 1 – Analysis Type Dialog Box

To use the LFDS tool, press <OK> (the query in the dialog box should remain set to “No”).

## LFDS Version 2.1 Bug Fixes

- 1) <Close> button on quantity plots disabled during analysis execution.
- 2) Resolved NumberFormatExceptions when table fields are left blank during analyses.
- 3) Added check for LRU EOS dates that are < LRU introduction dates.
- 4) Extraneous print statements removed.
- 5) Fixed value in reliability distribution was no persistent when dialog box was closed – fixed.