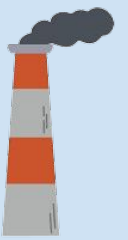




CPSG101 Carbon Footprint Infographic

Larson Ozbun



College Student

Food/Housing: 4.03



Transportation: 1.05



Travel: 0

Total: 10.08



Family Household (2)

Food/Housing: 10.47



Transportation: 11.06



Travel: 0

Total: 26.53



*each tree represents 2 tons CO₂/yr

The difference of carbon footprints between college life and household comes down mainly to transportation, food, and housing. Not as much travel by car is required in college compared to with a household. Additionally, the household accounts for two cars. Finally, the household's diet accounts for two separate people compared to only one for college.