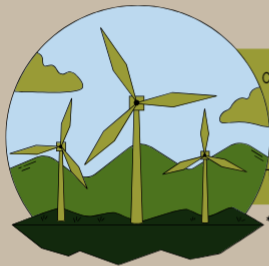


CPSG CARBON FOOTPRINT INFOGRAPHIC

Liam Brune



Current Pollutant Numbers:

Household and Food Footprint: 413 tons of CO₂

Transportation Footprint: 3.97 tons of CO₂

Travel Footprint: 158 tons of CO₂

Total Footprint:

968 tons of CO₂

*Assumes that I'm living in a dorm year round; Otherwise as close to my real life as possible

Future Pollutant Numbers:

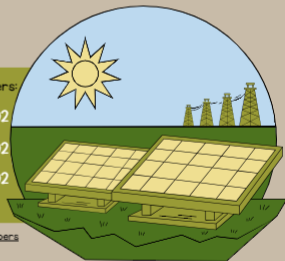
Household and Food Footprint: 889 tons of CO₂

Transportation Footprint: 456 tons of CO₂

Total Footprint: Travel Footprint: 318 tons of CO₂

1663 tons of CO₂

*Assumes that I live in a single family home with 4 family members



Why the difference?

My Carbon footprint, on the surface, appears to be almost twice as high in my hypothetical future scenario, but that number doesn't tell the whole story. Per person, my future footprint is significantly lower because the resources whose byproducts are pollutants are shared among multiple people. Making the process more "efficient" from an emissions standpoint.

