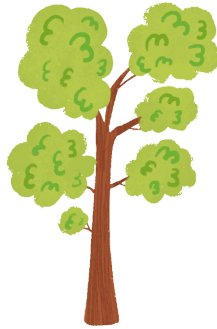


# CPSG101 CARBON FOOTPRINT INFOGRAPHIC

By: Jason Liu

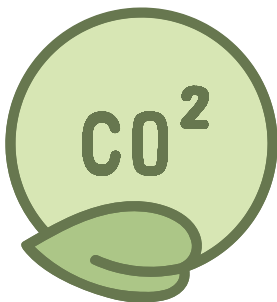
## My present day emissions:

# of residents: 3  
Household footprint (in trees): 71  
Transportation footprint (in trees): 0  
Travel footprint (in trees): 1  
Total footprint (in trees): 129  
Total footprint (in CO<sub>2</sub>/yr): 9.06 tons



## My predicted future emissions:

# of residents in household: 4  
Household footprint (in trees): 270  
HH footprint per capita: 67.5 trees  
Transportation footprint (in trees): 59  
Transportation footprint per capita: 14.75 trees  
Travel footprint (in trees): 14  
Travel footprint per capita: 3.5  
Total footprint (in trees): 515  
Total footprint (in CO<sub>2</sub>/yr): 36.05 tons



## Explanation for the Differences:

As you can see in the data provided above, my future emissions are greater than my current emissions. This is because in the future, I predict to have 4 people in my household, so my per capita emissions are less.

However, in the future, I will have a greater footprint in the transportation category, since I expect to travel by car. This is because currently, I travel mostly by walking or by taking the bus/metro. I also expect to be sparsely travelling in the future, so I would have a higher travel footprint in the future.

I expect my per capita footprint to be lower in the future, since I believe that renewable energy will be more accessible in the future, and I can see myself taking advantage of that.

