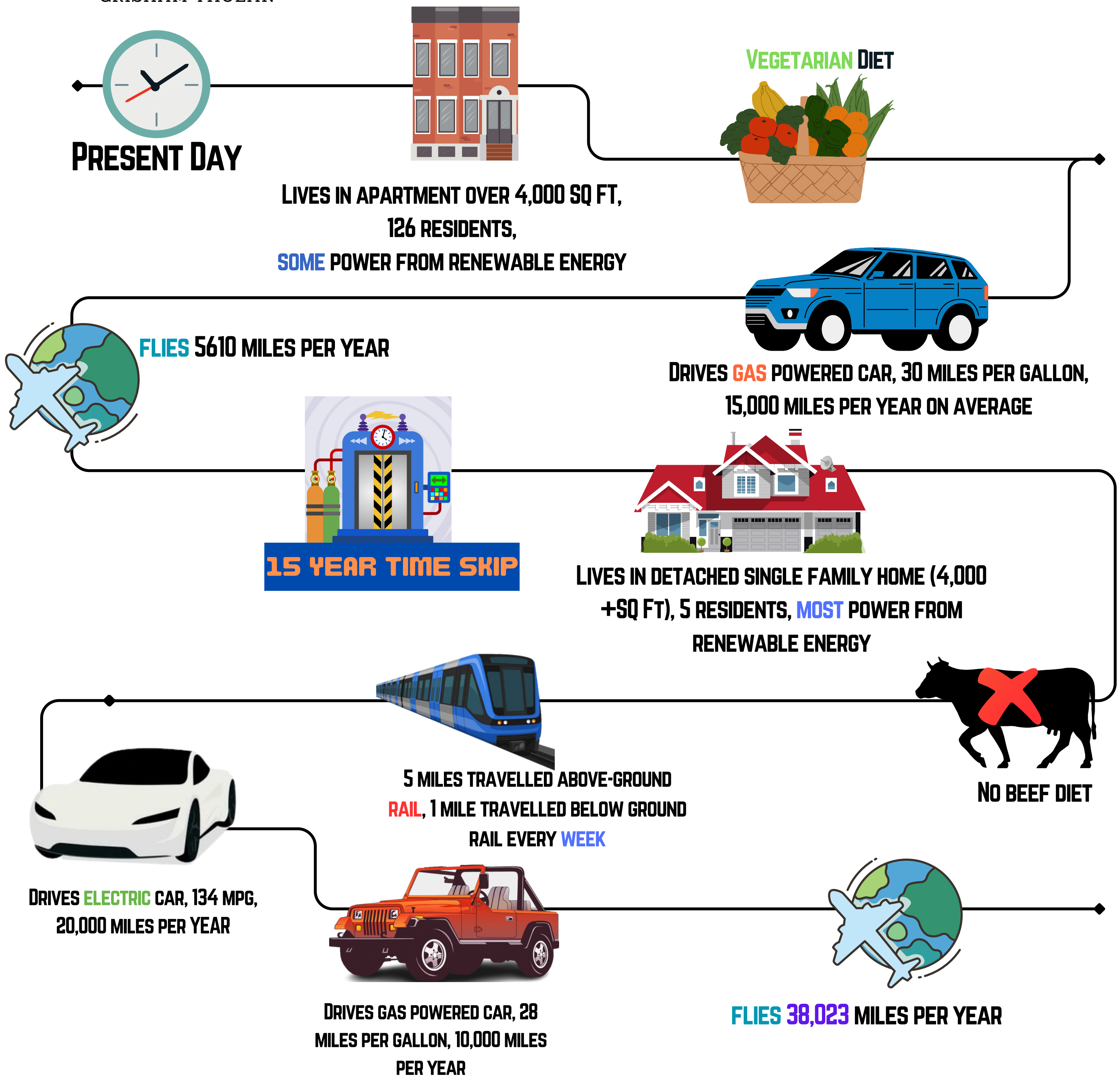


# CPSG101 CARBON FOOTPRINT INFOGRAPHIC

GRISHAM THOLAN



## UNIVERSITY FRESHMAN EMISSIONS

HOUSEHOLD AND FOOD: 2.95 TONS CO<sub>2</sub>/YEAR  
TRANSPORTATION: 3.56 TONS CO<sub>2</sub>/YEAR  
TRAVEL: 1.12 TONS CO<sub>2</sub>/YEAR

## 30-YEAR OLD EMISSIONS (PER CAPITA)

HOUSEHOLD AND FOOD: 2.412 TONS CO<sub>2</sub>/YEAR  
TRANSPORTATION: 0.654 TONS CO<sub>2</sub>/YEAR  
TRAVEL: 1.52 TONS CO<sub>2</sub>/YEAR

REASONING: MY PER CAPITA HOUSEHOLD AND FOOD EMISSIONS WERE LOWER IN THE 30 YEAR OLD SCENARIO BECAUSE MOST OF OUR POWER WAS FROM RENEWABLE ENERGY. TRANSPORTATION EMISSIONS WERE MUCH LOWER IN THE SECOND SCENARIO TOO BECAUSE I (UNREALISTICALLY) ASSUMED MY FAMILY OF 5 WOULD SHARE 2 CARS FOR ONLY 30,000 MILES PER YEAR IN TOTAL. HOWEVER, MY TRAVEL EMISSIONS WERE HIGHER BECAUSE I SEE MYSELF TRAVELING MORE WHEN I GET OLDER.