

CAITLIN'S CARBON FOOTPRINT

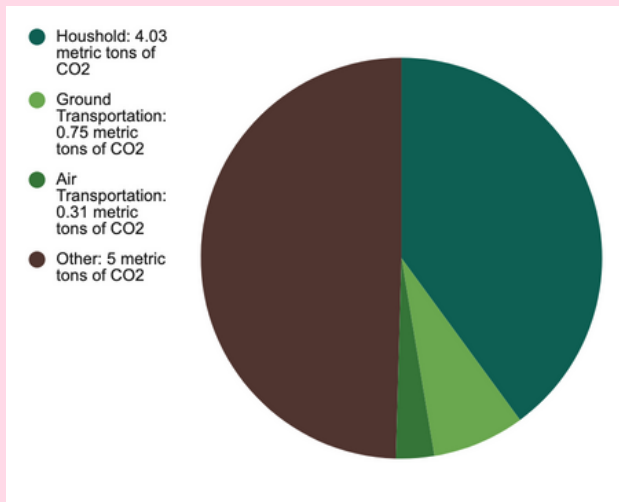
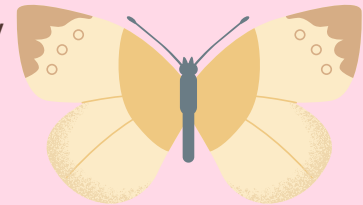
CPSG101 Carbon Footprint Infographic

Current Footprint: 10.09 metric tons of Carbon Dioxide

As of right now, I am a college student living in the dorm who walks most places. I go home every other weekend and doesn't travel that far for vacation. Additionally, I am an omnivore (eats meat and plant).

My input into an online carbon footprint calculator, based off of my **current** living conditions are:

- living in an apartment building (5+ units)
- over 4000 square feet
- 1%-49% of the power is from solar / wind / hydropower / nuclear
- 30+ residents
- average omnivore diet
- 80 miles of (non-electric) car usage every other week
- 25 mpg average fuel economy
- 2 miles of weakly bus usage
- 1560 miles flown per year

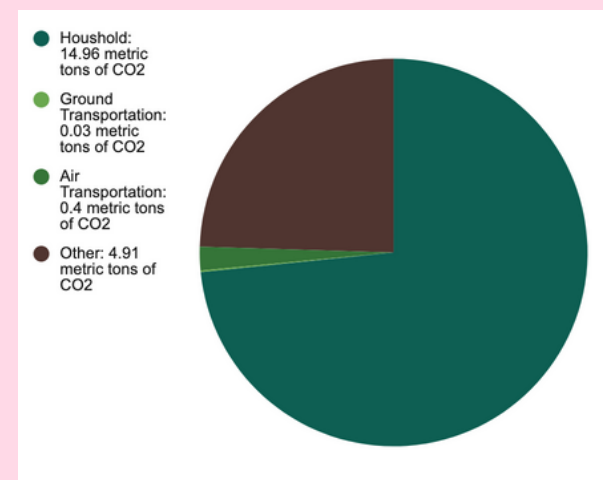


Future Footprint: 20.39 metric tons of Carbon Dioxide

Now, let's look at the hypothetical future if I had a family!

My input into an online carbon footprint calculator, based off of my **future** living conditions are:

- attached single family home
- 1,500-1,999 square feet
- 1%-49% of the power is from solar / wind / hydropower / nuclear
- 4 residents (myself, a spouse, and two children)
- average omnivore diet
- 45 miles of car usage every week on one electric car
- 100 mpg average fuel economy
- 10 miles of weakly bus usage
- 2000 miles flown per year



Why the differences? The amount of people in the household, type of car, amount of distance traveled are all different.