

Sample Comments-Algorithm Assignment (Assignment II) PHIL280

I. Correctness of Algorithm (5/10)

II. Accuracy of Statement of Purpose & Initial Conditions (2/10)

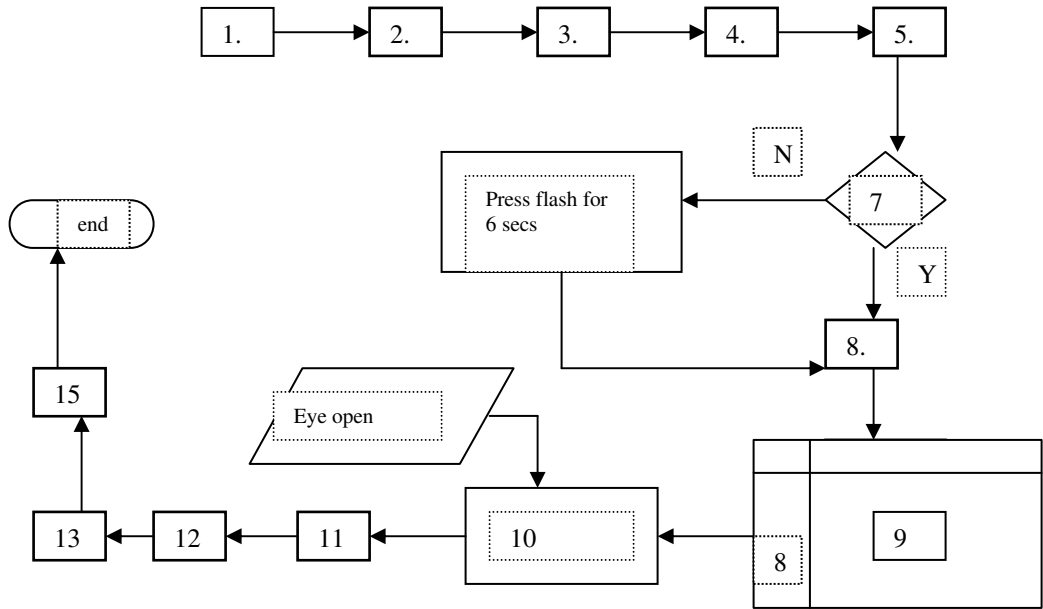
- You're confusing 'allowable input' with item III below. Examples of allowable inputs would include a target that's within 20 feet (from your item 5.) (-1 pts)

III. Appropriateness/completeness of description of computing agent(2/10)

- You're setting yourself up for an open-ended list (one that could never be exhausted). For instance, what about the agent's motor-skills in his or her arms and legs? The best way to avoid this is to say something: "An agent with normal muscle, nerve, sensory, and cognitive functions, possessing a normally functioning camera."

IV. Flowchart

- (no flowchart – 1 pt) To specify a flowchart¹, commands are boxes, rhombi are input data, diamonds specify binary (yes/no) decisions, and the double-box (command 9.) is a storage (indicating 'While doing 8.'). A flowchart for your algorithm would be:



¹ Though the rhombus and double-box is optional, i.e. you can just use boxes